





**CONSENT CALENDAR**

1. Approved/ratified purchase orders in the following amounts: **(2013/2014)** – General Fund (01), \$696,791.05; Child Development Fund (12), \$12,196.25; Cafeteria Fund (13), \$2,144.37; Capital Facilities Fund (25), \$50,116.78; Building Fund Measure A (Series A) Fund (26), \$3,857.85; Building Fund Measure A (Series B) Fund (27), \$17,040.15; Building Fund Measure A (Series C) Fund (28), \$3,070.44; Building Fund Measure A (Series D) Fund (30), \$67,791.34; Building Fund Measure A (Series E) Fund (31), \$5,706.00; School Facilities Fund Prop 47 Fund (39), \$206,346.83; Special Reserve – Cap Outlay Fund (40), \$22,027.00; Insurance Workers' Comp Fund (68), \$24,972.86; Insurance Property Loss Fund (70), \$35,506.03; Insurance Comp Liability Fund (82), \$85,588.00; Community Facilities Distr. #1, Fund (91), \$7,25
2. Approved warrant listings in the following amounts: Warrant Registers #899901, #000101 through 015001 and #525913 through 527613; current year expenditures (December 15, 2013 through January 25, 2014) \$8,192,379.92; total prior year expenditures, \$16,629.52 (2012-2013); and payroll register 6A, \$9,695,241.96 and 6B, \$3,416,956.62
3. Authorized the continued use of RFP #2011-02, Solid Waste Management and Recycling Services District-Wide, through December 31, 2014 with Republic Services.
4. Authorized the use of Contract No. 3-02-36-0052A and all supplements for the procurement and warranty of Office Imaging and Document Solutions products, installation, maintenance, and repair of Konica Minolta brand products through December 31, 2016.
5. Authorized the use of CMAS Contract No. 4-14-75-0050A for the purchase and warranty of HP brand printing supplies through February 28, 2015.
6. Designated textbooks as obsolete and approved disposal per Education Code 60530.
7. Approved contractor(s) for Open Field Service Agreement(s). (See attached.)
8. Accepted as complete the project(s) listed and authorized filing Notice(s) of Completion. (See attached.)
9. Approved Independent Contractor Agreements – Maintenance and Facilities – as listed in accordance with Board Policy No. 4124, Retention of Consultants. (See attached.)
10. Approved Amendment No. 2 for the inspection services agreement with Reliant Testing Engineers, Inc. for geotechnical materials inspection and testing services for the Bradford Stadium Concession/Entry Modernization project at Valencia High School. Contract No. 1314-06. Project No. VHS-9224-9307-071. Purchase Order No. 40071.
11. Approved Amendment No. 2 for the inspection services agreement with Reliant Testing Engineers, Inc. for geotechnical materials inspection and testing services for the Auditorium HVAC project at Valencia High School. Contract No. 1314-07. Project No. VHS-9224-9303-030. Purchase Order No. 400770.
12. Approved extension of time to the attached list of contracts. (See attached.)
13. Approved the use of the Western States Contracting Alliance (WSCA/NASPO) Contract B27164-CA for the purchase of HP Chromebooks for Common Core testing and subsequent daily use.

**CONSENT CALENDAR, Continued**

14. Approved Amendment No. 1 for the Orange County Superintendent of Schools (OCDE) Internet Network Support Services Agreement through June 30, 2016.
15. Approved the mutual Transportation Services Agreement with Hemet Unified School District effective February 12, 2014 through June 30, 2018.
16. Approved Independent Contractor Agreements – Educational Services – as listed in accordance with Board Policy No. 4124, Retention of Consultants. (See attached.)
17. Approved special education master contracts, individual services contracts and related services. (Individual contracts on file.) (See attached.)
18. Approved Morse Elementary and Mabel Paine Elementary schools to participate in the Inside the Outdoors School and/or Field Program with the Orange County Department of Education.
19. Approved waivers requested by parents of students on the attached list who have met the CAHSEE requirement in the indicated area. (See attached.)
20. Approved the waiver requested by Educational Services for release of the STAR 2013 Apportionment Funds.
21. Approved contract with Colonial Chesterfield at Riley's Farm and Fairmont Elementary for a one-day school field trip on June 2, 2014 to Oak Glen, California.
22. Approved contract with Colonial Chesterfield at Riley's Farm and Kraemer Middle School for a one-day school field trip on May 15, 2014 to Oak Glen, California.
23. Approved program contracts with Long Beach Marine Institute and Kraemer Middle School to attend field trips to Long Beach and Catalina Island, California on April 1 and April 2, 2014.
24. Approved group tour agreement with Travel Teens and Rio Vista Elementary School to attend field trips to Santa Barbara, California on June 2, June 3, June 4 and June 5, 2014.
25. Approved Memorandum of Understanding with Parent to Parent and the Placentia-Yorba Linda Unified School District parenting series beginning March 26 – June 4, 2014.
26. Approved Student Work Internship Agreements for Adult Transition Program for the 2013-2014, 2014-2015, 2015-2016 and 2016-2017 school years.
27. Held by Board Member Eric Padget.
28. Accepted gifts as listed, such action being in compliance with Education Code Section 41032, and directed the Superintendent to send letters of appreciation. (See attached.)
29. Approved the Stipulated Expulsion Agreement between the Placentia-Yorba Linda Unified School District and the parents of 1406B.





**BOARD REPORT**

1. Mrs. Karin Freeman shared briefly regarding a recent North Orange County Regional Occupational Program competition for the Orange County Auto Dealers Association (OCADA). She also indicated that the Orange County Committee on School District Organization will hold a hearing on March 5 relative to a resolution from Anaheim Union High School District to change their election of trustees from “at large” to “by trustee” areas. Anaheim City School District is considering a similar change. Mrs. Freeman enjoyed her visit to the Engineering and Manufacturing Open House at Esperanza High School and noted that there were many visitors from other parts of the state. In conclusion, Mrs. Freeman indicated the Yorba Linda Chamber of Commerce Education Committee had recently met at El Camino Real High School for the Business Booster Club. The Education Committee is also planning for the district’s Principal for a Day event on March 19, 2014.
2. Mrs. Judi Carmona has enjoyed her visits to schools and learning how the Common Core math standards are being implemented. Recently, she was pleased to serve as a judge for the science fair projects at Linda Vista Elementary School and was impressed by the quality of the projects, mentioning in particular a project relative to distracted driving. Mrs. Carmona attended the Open House at the Engineering and Manufacturing program at Esperanza High School and shared her pride in the program. She was also excited to have the opportunity to tour the John Lennon Educational Bus which recently visited Tuffree Middle School. It was a wonderful experience for the participating students . . . and for her personally as a Beatles fan! Mrs. Carmona plans to attend the Orange County Sheriff’s Department’s Drug Trends Workshop and will be visiting Valadez Middle School Academy tomorrow (February 12) to welcome a delegation of teachers from Shanghai and share with them her wonderful experiences from her visit to China last year. Mrs. Carmona shared that a recital is planned for February 26, 6 p.m., at the Valencia High School choir room. The recital will feature a number of El Dorado and Valencia High School students who are receiving free vocal and piano instruction from students at California State University, Fullerton. In addition, the REACH Foundation is sponsoring an open house at the district’s Performing Arts Center on February 22 from 9 a.m. to noon.
3. Mr. Eric Padget spent the last week in Washington, D.C., lobbying our local legislators. Mr. Padget shared an article from Ed Week relative to manufacturing job growth and the need for qualified applicants. He added that topics of discussion with the legislators included CTE (Career Technical Education), STEM (Science, Technology, Engineering, and Math), STEAM (Science, Technology, Engineering, Arts, and Math), funding for these programs, the availability of federal grants, and the impact of reductions to the federal budget on states. Mr. Padget also shared briefly regarding an Early Childhood Education bill.
4. Mrs. Carrie Buck shared that the PTA’s Reflections Showcase is scheduled for Monday, February 24, 7 p.m., at the district’s Professional Development Academy. She recently enjoyed attending the El Dorado High School vs. Esperanza High School basketball game as well as the recent OCSBA Fiscal Update event. Mrs. Buck visited Glenknoll, Rio Vista, Wagner, and Melrose Elementary Schools and commented on the integration of Common Core math and language arts and the collaborative configurations in the classrooms. Mrs. Buck spoke briefly regarding the Connections program that is in place at Wagner Elementary School. In addition, Mrs. Buck indicated she had attended the College and Career Readiness presentation, which was very worthwhile, as well as a Masters in Governance class relative to finance. She also expressed appreciation to the PTA for the recent PTA Founders’ Day Dinner that she had attended. In conclusion, Mrs. Buck shared about her recent visit to Esperanza High School and the “flipped” classrooms they have implemented.





**OPEN FIELD SERVICE AGREEMENT**

| <b><u>Vendor Name</u></b>    | <b><u>Contract #</u></b> | <b><u>Services Provided</u></b>                  |
|------------------------------|--------------------------|--------------------------------------------------|
| MD Rubberized Crackfill, LLC | OA-490021119             | Asphalt repair as needed throughout the district |

**NOTICES OF COMPLETION**

| <b><u>P.O. Number</u></b> | <b><u>Contractor</u></b>      | <b><u>Project</u></b>                                                                                                                                                                                                          |
|---------------------------|-------------------------------|--------------------------------------------------------------------------------------------------------------------------------------------------------------------------------------------------------------------------------|
| 403960                    | I & B Flooring, Inc.          | Bryant Ranch Elementary School<br>Bid No. 214-02<br>Carpeting Project                                                                                                                                                          |
| 403794                    | Hardy & Harper, Inc.          | Morse Elementary School<br>Bid No. 213-03<br>Asphalt/Earth Grading Unit Bid<br>Labor and material, and equipment<br>necessary to remove and install concrete,<br>grind existing asphalt and repave, blow<br>clean and restripe |
| 404225                    | Wicketts Intl. Plumbing Cont. | Valencia High School<br>Bid No. 210-26<br>Plumbing Unit Bid<br>Furnish the labor and material to replace<br>defective storm drain, roof drains, gas and<br>water piping as needed at the auditorium<br>building                |
| 404186                    | Imperial Paving Co., Inc.     | Travis Ranch Middle School<br>Labor and materials to remove and<br>replace ac pavement at Kindergarten<br>playground and Main parking lot                                                                                      |
| 403977                    | Time & Alarm Systems, Inc.    | La Entrada<br>Bid No. 211-2,<br>Fire Alarm and Low Voltage Bid<br>Labor and Material for voice and data<br>additions                                                                                                           |

**INDEPENDENT CONTRACTOR AGREEMENTS – MAINTENANCE AND FACILITIES**

Knowland Construction Services, Inc. Approve Independent Contract Agreement for DSA inspection services for Modernization Main Campus project at La Entrada School. Contract No. 1314-17. Contract period February 1, 2014 through December 31, 2014. Project No. LE-9235-9301-000.

Capital Facilities Fund (25) \$ 14,000

Dolinka Group Approve Independent Contract Agreement to provide the preparation of Residential and Commercial/Industrial Development School Fee Justification Studies for the 2013-2014 school year to substantiate statutory school fees for the District and identify the full school facilities impacts to be mitigated by these types of development within the District. Contract No. 1314-18. Project No. GPS-9553. Contract period February 1, 2014 through June 30, 2014.

Capital Facilities Fund (25) \$ 8,250

**EXTENSION OF TIME – VARIOUS CONTRACT SERVICES**

| <b>Vendor Name</b>                   | <b>Amendment No.</b> | <b>Contract No.</b> | <b>Project Number</b> | <b>Purchase Order</b> | <b>New Contract End Date</b> |
|--------------------------------------|----------------------|---------------------|-----------------------|-----------------------|------------------------------|
| American Reprographics Company (ARC) | 6                    | 0809-55             | BPS-9604              | 107359                | 12/31/14                     |

**INDEPENDENT CONTRACTOR AGREEMENTS – EDUCATIONAL SERVICES**

1. Christine Majors, Psy.D. Provider of independent educational evaluation services for special education student, October 14, 2013 – May 1, 2014; budgeted special education funds, NTE \$7,000.
2. Pathways 2 Speech Provider of audio-verbal therapy sessions for special education student, September 6, 2013 – June 30, 2014; budgeted special education funds, NTE \$4,000.
3. Abby Rozenberg M.S. Provider of independent educational evaluation services for special education student, October 14, 2013 – May 30, 2014; budgeted special education funds, NTE \$1,800.
4. Segerstrom Center for the Arts Presenter of student assembly for Woodsboro Elementary, February 19, 2014; budgeted gift funds, NTE \$910.
5. International Printing Museum, Inc. Presenter of history assembly for Bryant Ranch Elementary, March 18, 2014; budgeted gift funds, NTE \$600.
6. Discovery Science Center Presenter of science assembly for Wagner Elementary, April 21, 2014; budgeted gift funds, NTE \$325.
7. Metamorphosis Enterprises Presenter of science assembly for Wagner Elementary, June 6, 2014; budgeted gift funds, NTE \$645.
8. Metamorphosis Enterprises Presenter of science assemblies for Linda Vista and Wagner preschools, May 6 – May 9, 2014; budgeted child care funds, NTE \$1,200.
9. Kathy Ayeh Presenter of dance/music assembly for Wagner preschool, June 4, 2014; budgeted child care funds, NTE \$240.
10. California Weekly Explorer, Inc. Presenter of history assemblies for Bryant Ranch Elementary, April 7 – April 8, 2014; No cost to District.
11. Discovery Science Center Presenter of science assembly for Morse Elementary, April 7, 2014; budgeted gift funds, NTE \$852.
12. Kuder, Inc. Provider of training for staff in Kuder Career Exploration software, February 19, 2014; budgeted categorical funds, NTE \$2,000.

**SPECIAL EDUCATION CONTRACTS**

1. Del Sol School  
Master Contract for Nonpublic, Nonsectarian School/Agency Services from January 10 to June 30, 2014; budgeted special education funds, NTE \$10,000.
2. Southern California College of Optometry  
Master Contract for Nonpublic, Nonsectarian School/Agency Services from December 18, 2013 to June 30, 2014; budgeted special education funds, NTE \$500.
3. Parents of SPED student #512  
Reimbursement for travel expenses October 3, 2013 to April 24, 2014; budgeted special education funds, NTE \$2,525.

**CAHSEE WAIVERS**

| <b><u>School</u></b> | <b><u>Student ID #</u></b> | <b><u>Area of<br/>CAHSEE to<br/>be Waived</u></b> | <b><u>Score<br/>Achieved<br/>w/Modifications</u></b> | <b><u>Teacher</u></b> | <b><u>Date of<br/>CAHSEE</u></b> |
|----------------------|----------------------------|---------------------------------------------------|------------------------------------------------------|-----------------------|----------------------------------|
| Yorba Linda HS       | 45978                      | Math                                              | 356                                                  | Valerie Steinbergs    | 03/13/2013                       |

**GIFTS**

1. Check in the amount of \$500 from Wells Fargo Community Support Campaign to be used for instructional materials at Brookhaven Elementary.
2. Check in the amount of \$3,000 from Bryant Ranch PTA to be used for online-accelerated reader at Bryant Ranch Elementary.
3. Check in the amount of \$346.23 from United Way, Inc. to be used for instructional supplies at Fairmont Elementary.
4. Checks totaling the amount of \$14,980 from Fairmont PTA to be used for assemblies at Fairmont Elementary.
5. Checks totaling the amount of \$12,337.20 from Glenknoll PTA to be used for Xerox machines and instructional supplies at Glenknoll Elementary.
6. Check in the amount of \$1,716 from Marc and Joy Stewart to be used for outdoor science camp at Glenknoll Elementary.
7. Checks totaling the amount of \$100.02 from Edison International – Employee Contribution Campaign to be used for instructional supplies Golden Elementary.
8. Check in the amount of \$250 from Edison International – Employee Contributions Campaign to be used for materials and supplies at Kraemer Middle School.
9. Checks totaling the amount of \$7,840 from Lakeview PTA to be used for assemblies and field trip transportation for Lakeview Elementary.
10. Check in the amount of \$500 from Linda Vista PTA to be used for Reading Counts program materials at Linda Vista Elementary.
11. Checks totaling the amount of \$9,582 from Mabel Paine PTA to be used for field trips and Accelerated Reader renewal for Mabel Paine Elementary.
12. Check in the amount of \$170 from Bank of America – United Way Campaign to be used for office materials at Mabel Paine Elementary.
13. Check in the amount of \$99 from Target Corporation – Give with Target to be used for office materials at Mabel Paine Elementary.
14. Check in the amount of \$200 from Yorba Linda Sunrise Rotary Club Foundation to be used for instructional materials at Mabel Paine Elementary.
15. Check in the amount of \$2,303.55 from Melrose PTA to be used for “We Rock the Test” T-shirts for staff and students at Melrose Elementary.
16. Check in the amount of \$10,000 from Rose Drive PTA to be used for field trip transportation for Rose Drive Elementary.
17. Checks totaling the amount of \$6,000 from Sierra Vista PTA to be used for PTA photocopying, paper and field trip transportation at Sierra Vista Elementary.
18. Check in the amount of \$700 from Target Field Trip Grant – Scholarship America to be used for a field trip for Topaz Elementary.
19. Check in the amount of \$2,500 from Quartz Group, Inc. to be used for instructional supplies at Travis Ranch Middle School.
20. Check in the amount of \$50 from Tustin Lexus to be used for instructional supplies at Travis Ranch Middle School.
21. Check in the amount of \$700 from Wells Fargo Community Support Campaign to be used for instructional supplies at Travis Ranch Middle School.
22. Check in the amount of \$50 from Christopher and Susan Aldrich to be used for instructional supplies at Travis Ranch Elementary.
23. Checks totaling the amount of \$300 from Mr. and Mrs. John Kenmonth to be used for instructional supplies at Travis Ranch Elementary.
24. Checks totaling the amount of \$1,695 from Travis Ranch PTA to be used for assemblies and transportation at Travis Ranch Elementary.



25. Check in the amount of \$5,000 from Tuffree Middle School Associated Student Body to be used for sound system equipment and shade for common areas at Tuffree Middle School.
26. Check in the amount of \$500 from Wells Fargo Community Support Campaign to be used for instructional technology at Tuffree Middle School.
27. Check in the amount of \$4,990.90 from Education Foundation to be used for materials and supplies at Tynes Elementary.
28. Checks totaling the amount of \$1,116 from Tynes PTA to be used for field trip admission and transportation at Tynes Elementary.
29. Check in the amount of \$1,400 from Nora Valadez to be used for eighth-grade field trip at Valadez Middle School Academy.
30. A Glasser bass bow to be used for the music department/program at Valadez Middle School Academy.
31. Check in the amount of \$50 from Tustin Lexus to be used for instructional materials at Valencia High School.
32. A ceramics class pug mill from Bob Hadley to be used to recycle clay at Valencia High School.
33. Check in the amount of \$100 from Tustin Lexus to be used for instructional materials and supplies at Yorba Linda High School.
34. A Promethean ActivBoard from California State University, Fullerton to be used for classroom instruction at Melrose Elementary.
35. Two Chromebook computers from The Orange County Register to be used for classroom instruction at Tynes Elementary.

**CLASSIFIED PERSONNEL REPORT**

Retirement

| <u>Name</u>      | <u>Position</u> | <u>Site</u>    | <u>Effective</u> |
|------------------|-----------------|----------------|------------------|
| Renee Richardson | Bus Driver      | Transportation | 03/31/14         |

Employ

| <u>Name</u>        | <u>Position</u>        | <u>Site</u>  | <u>Effective</u> |
|--------------------|------------------------|--------------|------------------|
| Fatima Al-Eshaiker | SPED Aide II           | YLMS         | 12/17/13         |
| Joel Alonso        | SPED Aide II           | G. Key       | 01/24/14         |
| Brittany Daniel    | SPED Aide III          | Tynes        | 01/09/14         |
| Yessica Deporter   | Translator/Interpreter | Spec. Ed.    | 01/27/14         |
| Edith Gonzalez     | SPED Aide II           | YLMS         | 12/17/13         |
| Rebecca Hall       | SPED AIDE II           | Sierra Vista | 11/14/13         |
| Sally Hong         | Academy Tutor          | Tynes        | 02/03/14         |
| Christopher Mason  | SPED Aide III          | Tynes        | 01/07/14         |
| Cristina Steffe    | SPED Aide II           | Tynes        | 01/13/14         |

Resignation

| <u>Name</u>      | <u>Position</u>      | <u>Site</u>  | <u>Effective</u> |
|------------------|----------------------|--------------|------------------|
| Allison Adams    | SPED Aide III        | Mabel Paine  | 02/03/14         |
| Nancy Almazan    | SPED Aide II         | Tynes        | 02/03/14         |
| Tracy Baptista   | SPED Aide II         | Wagner       | 01/10/14         |
| Veronica Cosme   | Food Service Worker  | Lakeview     | 01/06/14         |
| Nancy Espinoza   | Food Service Worker  | YLMS         | 01/03/14         |
| Alexandra Hawley | Child Care Teacher I | Brookhaven   | 01/24/14         |
| Sharon Lester    | SPED Aide I          | Woodsboro    | 01/30/14         |
| James Oronoz     | SPED Aide III        | Travis Ranch | 01/21/14         |
| Susan Puch       | SPED Aide III        | Fairmont     | 01/27/14         |
| Lauren Reece     | Child Care Teacher I | Fairmont     | 01/17/14         |
| Irma Sanchez     | Bilingual Clerk II   | Topaz        | 01/10/14         |
| Christa Schultz  | Child Care Teacher I | Bryant Ranch | 01/27/14         |

Leave of Absence

| <u>Employee</u> | <u>Position</u> | <u>Site</u> | <u>Reason</u>   | <u>Effective</u>  |
|-----------------|-----------------|-------------|-----------------|-------------------|
| Estenia Garcia  | Academy Tutor   | Melrose     | Education Leave | 01/16/14-05/23/14 |

Termination

| <u>Name</u>       | <u>Position</u> | <u>Site</u> | <u>Reason</u>     | <u>Effective</u> |
|-------------------|-----------------|-------------|-------------------|------------------|
| Veronica Bautista | SPED Aide I     | Esperanza   | Probation Release | 01/15/14         |

Change of Status

| <u>Employee</u>     | <u>From</u>               | <u>To</u>                    | <u>Effective</u> |
|---------------------|---------------------------|------------------------------|------------------|
| Leanabeth Arauz     | Bi-Clerk II               | Bi-Sch. Secretary II-Kraemer | 01/28/14         |
| Ashley Balch        | SPED Aide II 3.50 Hrs     | SPED Aide III 3.75 Hrs       | 01/27/14         |
| Susan Davila        | SPED Aide III 3.5Hrs      | SPED Aide III 3.75Hrs        | 11/06/13         |
| Delila Detwiler     | SPED Aide III 3.5 Hrs     | SPED Aide III 3.75 Hrs       | 01/15/14         |
| Esperanza Fierro    | Food Svs Worker 1 Hr      | Food Svs Worker 2 Hrs        | 01/08/14         |
| Dana Griffiths      | Payroll Clerk             | Personnel Tech-Conf.         | 02/12/14         |
| Alexandria Guerrero | Child Care Tch I 2.75 Hrs | Child Care Tch I 3.5 Hrs     | 01/10/14         |
| Sandra Gutierrez    | Inst. Handicap Tech.      | Translator                   | 01/13/14         |
| Matthew Hernandez   | SPED Aide II 3.0 Hrs      | SPED Aide II 3.75 Hrs        | 01/15/14         |
| Sonia Herrington    | SPED Aide II 3.5 Hrs      | SPED Aide II 3.75 Hrs        | 01/15/14         |
| Ami Mulhall         | SPED Aide III 3.5 Hrs     | SPED Aide III 3.75 Hrs       | 01/15/14         |

Change of Status (Cont'd)

| <u>Employee</u>    | <u>From</u>              | <u>To</u>              | <u>Effective</u> |
|--------------------|--------------------------|------------------------|------------------|
| Brittany Norton    | SPED Aide II 3.0 Hrs     | SPED Aide II 3.75 Hrs  | 01/21/14         |
| Suzanne Norton     | SPED Aide III 3.5 Hrs    | SPED Aide III 3.75 Hrs | 01/15/14         |
| Elizabeth Orizabal | Bi School Readiness Aide | Child Care Tch I       | 01/06/14         |
| Margot Perez       | SPED Aide II             | Translator             | 01/13/14         |
| Darin Rucker       | SPED Aide III 3.5 Hrs    | SPED Aide III 3.75 Hrs | 01/15/14         |
| Youngkyung Suh     | SPED Aide II 3.0 Hrs     | SPED Aide II 3.75 Hrs  | 01/15/14         |
| Dawn Tagalon       | SPED Aide II 3.5 Hrs     | SPED Aide II 3.75 Hrs  | 01/15/14         |
| Karen Wolcott      | SPED Aide III 3.5 Hrs    | SPED Aide III 3.75 Hrs | 01/15/14         |

Working Out of Class

| <u>Employee</u> | <u>From</u>     | <u>To</u>          | <u>Effective</u>  |
|-----------------|-----------------|--------------------|-------------------|
| Joanie Fillion  | Account Clerk I | Child Care Ld Tchr | 01/10/14-03/31/14 |

| <u>Short Term</u>  | <u>NTE Hrs</u> | <u>Reason</u>          | <u>Site</u>  | <u>Effective</u>  |
|--------------------|----------------|------------------------|--------------|-------------------|
| Maria Alvarado     | 80             | McKinney Vento Support | Ed Svs       | 01/27/14-06/13/14 |
| Sean Burd          | 30             | Testing Support        | Valadez      | 02/11/14-05/30/14 |
| Linda Cagney       | 10             | Curriculum Training    | Ed Svs       | 01/15/14-06/30/14 |
| Annabella Chang    | 98             | Clerical Support       | Rio Vista    | 01/06/14-06/12/14 |
| Sandra M. Chavez   | 25             | CASA Support           | Rio Vista    | 02/12/14-06/13/14 |
| Linda Cotta        | 10             | Curriculum Training    | Ed Svs       | 01/25/14-06/30/14 |
| Pamela Deneau      | 10             | Curriculum Training    | Ed Svs       | 01/15/14-06/30/14 |
| Samadi Dixon       | 6              | Translator             | Melrose      | 11/20/13-06/15/14 |
| Samadi Dixon       | 20             | Interpreter            | SPED         | 01/06/14-01/31/14 |
| Samadi Dixon       | 100            | Interpreter            | SPED         | 02/01/14-06/12/14 |
| Dayne Esquivel     | 50             | ELD Support            | Sierra Vista | 01/17/14-06/13/14 |
| Gladys Fetter      | 10             | Curriculum Training    | Ed Svs       | 01/15/14-06/30/14 |
| Pia Fiore          | 20             | Clerical Support       | Glenview     | 02/03/14-06/30/14 |
| Lynn Forkel        | 30             | Testing Support        | Valadez      | 02/01/14-05/30/14 |
| Anna Maria Garcia  | 50             | Student Med Support    | Topaz        | 01/15/14-06/12/14 |
| Elaine Hebert      | 10             | Curriculum Training    | Ed Svs       | 01/15/14-06/30/14 |
| Chaz Holton        | 274            | AVID Tutor             | El Dorado    | 01/22/14-06/13/14 |
| Sally Hong         | 40             | CASA Support           | Tynes        | 02/03/14-06/13/14 |
| William M. Johnson | 10             | Student Support        | George Key   | 12/07/13-01/30/14 |
| Trisha Ladd        | 10             | Curriculum Training    | Ed Svs       | 01/15/14-06/30/14 |
| Tammy Llorens      | 10             | Curriculum Training    | Ed Svs       | 01/15/14-06/30/14 |
| Lizbeth Lopez      | 25             | CASA Support           | Rio Vista    | 02/12/14-06/13/14 |
| Catherine Martinez | 10             | Curriculum Training    | Ed Svs       | 01/15/14-06/30/14 |
| Michael Motta      | 160            | AVID Tutor             | El Dorado    | 01/07/14-06/13/14 |
| Lisa Munn          | 10             | Student Support        | George Key   | 12/07/13-01/30/14 |
| Carlos Pasillas    | 50             | Student Support        | George Key   | 12/07/13-01/30/14 |
| Emma J. Patino     | 20             | Interpreter            | SPED         | 01/06/14-01/31/14 |
| Emma J. Patino     | 100            | Interpreter            | SPED         | 02/01/14-06/12/14 |
| Margot Perez       | 15             | Interpreter            | SPED         | 01/06/14-01/31/14 |
| Herminia Perry     | 20             | Interpreter            | SPED         | 01/06/14-01/31/14 |
| Herminia Perry     | 100            | Interpreter            | SPED         | 02/01/14-06/12/14 |
| Lisa Pierro        | 10             | Curriculum Training    | Ed Svs       | 01/15/14-06/30/14 |
| Claudia Ramirez    | 50             | Clerical Support       | Ed Svs       | 01/06/14-06/30/14 |
| La Mae Reck        | 10             | Curriculum Training    | Ed Svs       | 01/15/14-06/30/14 |

| <u>Short Term</u>         | <u>NTE Hrs</u> | <u>Reason</u>             | <u>Site</u>  | <u>Effective (Cont'd)</u> |
|---------------------------|----------------|---------------------------|--------------|---------------------------|
| Soledad Resendiz          | 15             | SPED Bus Support          | Tynes        | 01/06/14-01/31/14         |
| Karen Salemi              | 10             | Curriculum Training       | Ed Svs       | 01/15/14-06/30/14         |
| Martina Sandoval          | 40             | McKinney Vento<br>Support | Ed Svs       | 01/27/14-06/13/14         |
| Susan Shedd               | 20             | Student Med Support       | Travis Ranch | 01/06/14-06/14/14         |
| Chelcy Suarez             | 25             | CASA Support              | Rio Vista    | 02/12/14-06/13/14         |
| Susan Swinfard            | 10             | Translator                | Melrose      | 11/18/13-06/14/14         |
| Leatrice Taylor<br>Larson | 10             | Pro-Act Training          | SPED         | 01/29/14-02/06/14         |
| Amy Troup                 | 10             | Curriculum Training       | Ed Svs       | 01/15/14-06/30/14         |
| Miryam Vasquez            | 20             | Translator                | Valadez      | 02/11/14-04/04/14         |
| Ian Volker                | 50             | Student Support           | George Key   | 12/07/13-01/30/14         |
| Mary J. Watt              | 30             | Clerical Support          | Supt. Office | 03/01/14-06/30/14         |
| Alma Y. Wheat             | 20             | Interpreter               | SPED         | 01/06/14-03/31/14         |
| Alma Y. Wheat             | 98             | Clerical Support          | Ruby Drive   | 01/14/14-06/30/14         |

| <u>Substitutes</u>          | <u>Position</u>           | <u>Site</u> | <u>Effective</u>  |
|-----------------------------|---------------------------|-------------|-------------------|
| Fatima Al-Eshaiker          | SPED Aide I/II            | All Sites   | 01/06/14-06/12/14 |
| Adriana Alatorre            | Child Care Teacher I      | All Sites   | 01/16/14-06/30/14 |
| Ana Baker                   | SPED Aide I               | Wagner      | 01/10/14-06/12/14 |
| Daisy Bennett               | SPED Aide I/II/III        | Various     | 09/04/13-06/12/14 |
| Jeanette Besheer-Hogan      | SPED Aide I/II            | All Sites   | 01/08/14-06/12/14 |
| Sara Bissell                | Schl Sec/Att Clrk/ClerkII | YLMS        | 01/15/14-06/30/14 |
| Denise Broadwater           | SPED Aide I/II            | Brookhaven  | 11/20/13-06/12/14 |
| Patricia Cardenas           | SPED Clerk II             | Topaz       | 01/07/14-02/18/14 |
| Linda Cotta                 | Comp. Inst. Spec.         | Topaz       | 12/16/13-06/13/14 |
| Oneyda Diaz                 | SPED Aide II              | Fairmont    | 01/10/14-06/12/14 |
| Gisela Dutton               | Comp. Inst. Spec.         | Topaz       | 01/15/14-06/13/14 |
| Sharon Edwards              | SPED Aide I/II            | Various     | 10/10/13-06/12/14 |
| Jennifer Ehrich             | Comp. Inst. Spec.         | Van Buren   | 12/02/13-06/12/14 |
| Jennifer Ehrich             | Com. Lab Aide             | Tynes       | 12/13/13-12/13/13 |
| Esperanza Fierro            | Food Svs Worker           | Food Svs    | 01/07/14-06/12/14 |
| Kim Galea                   | Clerk II                  | Tuffree     | 01/29/14-02/26/14 |
| Kathleen Gallagher Hilliard | SPED Aide I/II            | All Sites   | 12/12/13-06/12/14 |
| Ana Garcia                  | SPED Aide I/II            | All Sites   | 01/06/14-06/12/14 |
| Livier Huerta               | School Readiness Aide     | Ed Svs      | 01/13/14-06/30/14 |
| Jennifer Ehrich             | Comp. Inst. Spec.         | Rose Drive  | 12/01/13-06/13/14 |
| Jessica Lopez               | SPED Aide I/II            | All Sites   | 01/21/14-06/12/14 |
| Romana Lopez                | Secretary I               | Topaz       | 02/11/14-06/30/14 |
| Dana Morgan                 | SPED Aide I/II/III        | All Sites   | 09/06/13-06/12/14 |
| Sarah Norton                | SPED Aide I/II            | All Sites   | 11/12/13-06/12/14 |
| Karina Ornelas              | SPED Aide I               | All Sites   | 01/06/14-06/12/14 |
| Elizabeth Ortega            | Noon Duty Supv.           | Food Svs    | 12/10/13-06/13/14 |
| Herminia Perry              | SPED Aide I/II            | All Sites   | 09/06/13-06/12/14 |
| Torie Schmidt               | SPED Aide I/II            | All Sites   | 11/14/13-06/12/14 |
| Morgan Stocks               | SPED Aide I/II            | All Sites   | 01/21/14-06/12/14 |
| Marcia True                 | SPED Aide I/II/III        | All Sites   | 12/16/13-06/12/14 |
| Nancy Watson                | SPED Aide I/II            | All Sites   | 12/19/13-06/12/14 |

District Funded Co-Curricular Assignments

| <u>Stipends</u>   | <u>Assignment</u>      | <u>Site</u> | <u>NTE Amount</u> | <u>Effective</u>  |
|-------------------|------------------------|-------------|-------------------|-------------------|
| Kehli Bowen       | Women's Golf CIF       | Valencia    | \$416.00          | 10/23/13-10/31/13 |
| Kehli Bowen       | Men's Golf             | Valencia    | \$2534.00         | 02/15/14-05/09/14 |
| Matthew Brown     | Football CIF           | YLHS        | \$247.00          | 11/09/13-11/15/13 |
| Rich Burrell      | Football CIF           | YLHS        | \$247.00          | 11/09/13-11/15/13 |
| Steve DiTolla     | Football CIF           | YLHS        | \$247.00          | 11/09/13-11/15/13 |
| Shardad Djangiry  | Hd Men's Water Polo    | YLHS        | \$747.00          | 11/09/13-11/23/13 |
| Don Gallaher      | Colorguard CIF         | Valencia    | \$150.00          | 11/09/13-11/15/13 |
| Eduasyr Garcia    | Hd Women's Track       | Valencia    | \$3676.00         | 02/15/14-05/09/14 |
| Luis Garcia       | Track                  | Valencia    | \$2762.00         | 02/15/14-05/09/14 |
| Ryan Guidry       | Hd Women's Wrestling   | El Dorado   | \$3198.00         | 11/25/13-02/04/14 |
| Ethan Klotzer     | Men's Water Polo CIF   | Valencia    | \$416.00          | 11/02/13-11/20/13 |
| Dave Miller       | Hd Cross Country CIF   | YLHS        | \$747.00          | 11/09/13-11/30/13 |
| Marco Munoz       | Men's Swimming         | Valencia    | \$2534.00         | 02/15/14-05/09/14 |
| Michelle Munoz    | Women's Swimming       | Valencia    | \$2284.00         | 02/15/14-05/09/14 |
| Pete Perez        | Marching Band Director | Valencia    | \$204.00          | 11/09/13-11/15/13 |
| William Ray       | Football CIF           | YLHS        | \$247.00          | 11/09/13-11/15/13 |
| Adam Smith        | Men's Water Polo CIF   | YLHS        | \$624.00          | 11/09/13-11/23/13 |
| Noelle Thorne     | Men's Volleyball       | Valencia    | \$2534.00         | 02/18/14-05/07/14 |
| Vanessa Trevino   | Asst. Band Director    | Esperanza   | \$3882.00         | 11/01/13-06/30/14 |
| Michael Yoshinaga | Cross Country CIF      | YLHS        | \$624.00          | 11/09/13-11/25/13 |
| Abigael Zambrano  | Asst. Band Director    | YLHS        | \$3882.00         | 11/01/13-06/30/14 |

Booster Funded Co-Curricular Assignments

| <u>Stipends</u>  | <u>Assignment</u>    | <u>Site</u> | <u>NTE Amount</u> | <u>Effective</u>  |
|------------------|----------------------|-------------|-------------------|-------------------|
| Ryan Ackland     | Baseball             | Esperanza   | \$2000.00         | 09/30/13-01/31/14 |
| Amanda Barnes    | Song                 | Esperanza   | \$1400.00         | 01/01/14-06/30/14 |
| Daisy Bennett    | Event Supervision    | Kraemer     | \$300.00          | 10/16/13-06/13/14 |
| Erik Cook        | Football             | Valencia    | \$2700.00         | 08/19/13-11/08/13 |
| Shardad Djangiry | YLHS                 | YLHS        | \$2700.00         | 11/25/13-02/14/14 |
| John Domen       | Football CIF         | YLHS        | \$247.00          | 11/09/13-11/15/13 |
| Marty Dunn       | Football CIF         | YLHS        | \$247.00          | 11/09/13-11/15/13 |
| Mike Franco      | Baseball             | Esperanza   | \$1300.00         | 09/30/13-01/31/14 |
| Sarah Garcia     | Track                | Valencia    | \$2250.00         | 02/15/14-05/09/14 |
| Julie Gibson     | Event Supervision    | Kraemer     | \$300.00          | 10/16/13-06/13/14 |
| Keith Ginter     | Baseball             | Valencia    | \$2512.00         | 02/15/14-05/16/14 |
| Collin Gladys    | Men's Water Polo     | YLHS        | \$500.00          | 11/25/13-02/14/14 |
| Moe Habbal       | Men's Basketball     | El Dorado   | \$1500.00         | 11/25/13-02/14/14 |
| Daniel Hart      | Hd Men's Volleyball  | YLHS        | \$2000.00         | 11/25/13-02/14/14 |
| Anthony Jackson  | Softball             | Valencia    | \$2272.00         | 02/15/14-05/16/14 |
| Steve Kassner    | Football             | YLHS        | \$247.00          | 11/09/13-11/15/13 |
| Kory Kierulff    | Event Supervision    | YLHS        | \$1000.00         | 11/01/13-06/30/14 |
| Josh Linen       | Track                | Valencia    | \$2000.00         | 02/15/14-05/09/14 |
| Martin Luczaj    | Football             | YLHS        | \$2900.00         | 01/01/14-02/28/14 |
| Ani Marganian    | Men's Water Polo CIF | Valencia    | \$416.00          | 11/08/13-11/20/13 |
| Patrick Myeda    | Men's Soccer         | El Dorado   | \$1000.00         | 11/25/13-02/14/14 |
| Eliana Padilla   | Event Supervision    | Kraemer     | \$300.00          | 10/16/13-06/13/14 |
| David Salcido    | Baseball             | Esperanza   | \$2500.00         | 09/30/13-01/31/14 |
| Chad Schug       | Baseball             | Esperanza   | \$1300.00         | 09/30/13-01/31/14 |
| Vicky Self       | Event Supervision    | Kraemer     | \$300.00          | 10/16/13-06/13/14 |

Booster Funded Co-Curricular Assignments (Cont'd)

| <u>Stipends</u> | <u>Assignment</u> | <u>Site</u> | <u>NTE Amount</u> | <u>Effective</u>  |
|-----------------|-------------------|-------------|-------------------|-------------------|
| Adam Smith      | Men's Water Polo  | YLHS        | \$2000.00         | 11/25/13-02/14/14 |
| Will Stanley    | Men's Volleyball  | Valencia    | \$1614.00         | 02/18/14-05/07/14 |
| Al Verdun       | Baseball          | Esperanza   | \$500.00          | 09/30/13-01/31/14 |

Noon Duty Supervision, 2013-2014 SY

| <u>Employee</u>     | <u>Site</u>  |
|---------------------|--------------|
| Muhita Ahmad        | B-Yorba      |
| Jaime Betz          | Rose Drive   |
| Michelle Bui Nguyen | Brookhaven   |
| Astrid Devile       | Morse        |
| Kathy Gregory       | Mabel Paine  |
| Sandra Hinderliter  | Brookhaven   |
| Shellie Lee         | Travis Ranch |
| Estela Monroy       | Topaz        |
| Angelina Ortega     | Travis Ranch |
| Mikako Sernaque     | Woodsboro    |
| Maria Valerio-Gomez | Ruby Drive   |
| Linda Yankauskas    | Travis Ranch |

Child Care Program: Child Care Teacher I: All sites, Short Term: NTE 250 Hrs., Substitute, NTE 8 Hrs/Day, All Sites, 07/01/13-06/30/14

Mariah Alvarez  
 Taylor Helm  
 Laura Nguyen  
 Elizabeth Orizabal

**CERTIFICATED PERSONNEL REPORT**

Retirement

| <u>Employee</u>   | <u>Position</u> | <u>Site</u> | <u>Effective</u> |
|-------------------|-----------------|-------------|------------------|
| James Bell        | Principal       | Valencia    | 07/01/14         |
| Anne Haller       | Teacher         | George Key  | 01/31/14         |
| Jean Jacquot      | Teacher         | YLHS        | 07/01/14         |
| Elena Martin      | Teacher         | Valencia    | 07/01/14         |
| Jonna H. Robinson | Teacher         | Valencia    | 06/16/14         |
| Susan Worth       | Teacher         | George Key  | 06/16/14         |

Change of Status

| <u>Employee</u> | <u>From</u>   | <u>To</u>           | <u>Effective</u>  |
|-----------------|---------------|---------------------|-------------------|
| Kelly Buchan    | Teacher, 100% | Extend 1/6 Contract | 02/01/14-06/13/14 |
| Sharon Farrell  | Teacher, 100% | Extend 1/6 Contract | 02/01/14-06/13/14 |

Leaves of Absence

| <u>Employee</u> | <u>Position</u> | <u>Site</u> | <u>Reason</u> | <u>Effective</u>  |
|-----------------|-----------------|-------------|---------------|-------------------|
| Gina Aguilar    | Asst. Principal | Esperanza   | PDL/FMLA      | 01/31/14-03/28/14 |
| Amanda Cerda    | Teacher         | Ruby Drive  | PDL/CFRA/FMLA | 01/29/14-05/14/14 |
| Stephanie Dey   | Teacher         | Golden      | CFRA/FMLA     | 01/20/14-04/01/14 |
| Kathryn Fattal  | Teacher         | Mabel Paine | PDL/CFRA/FMLA | 11/04/13-04/18/14 |
| Amber Ferris    | Teacher         | YLHS        | PDL/CFRA/FMLA | 02/03/14-06/13/14 |
| Clarivel Munoz  | Teacher         | Kraemer     | PDL/FMLA      | 02/03/14-04/18/14 |
| Jennifer Soto   | Teacher         | Brookhaven  | PDL/CFRA/FMLA | 02/18/14-06/13/14 |
| Claire Viele    | Teacher         | Woodsboro   | CFRA/FMLA     | 10/05/13-11/15/13 |

Employ

| <u>Teacher</u> | <u>Subject</u>    | <u>Site</u>  | <u>Status</u> | <u>Effective</u> |
|----------------|-------------------|--------------|---------------|------------------|
| Rodney Boaz    | Elective/Business | Valencia     | Temp          | 02/03/14         |
| Phallin Chhe   | Math              | Travis MS    | Temp          | 02/03/14         |
| Patricia Chong | Elementary        | Bryant Ranch | Temp          | 01/20/14         |
| Iris Roeck     | Math              | El Dorado    | Temp          | 02/03/14         |

Hourly Positions

Educational Services, Home/Hospital Teachers, \$27/hr., Prep., \$25/Hr., 09/03/13-06/12/14

Beth Fox  
Vicky Garcia

Extra Duty Assignments

| <u>Employee</u> | <u>Site</u> | <u>Extra Duty</u>  | <u>Hrly. Rate</u> | <u>Hours</u> | <u>Effective</u>  |
|-----------------|-------------|--------------------|-------------------|--------------|-------------------|
| Jose Cabrera    | Rio Vista   | Admin. Support     | \$25              | 150          | 01/06/14-06/30/14 |
| Sandra Doh      | Tynes       | Proj. Read Train.  | \$25              | 2            | 01/14/14-01/14/14 |
| Tonya Gordillo  | Ed. Svs.    | GATE Presentation  | \$25              | 10           | 03/03/14-06/30/14 |
| Jackie Jenkins  | Mabel Paine | Math Yr. 1 Cohort  | \$25              | 24           | 03/06/14-03/28/14 |
| Terese Krueger  | Spec. Ed.   | Assessment Support | \$25              | 15           | 01/06/14-02/28/14 |
| Paul Laporte    | Rose Dr.    | French Class       | \$27              | 8            | 01/06/14-03/30/14 |
|                 |             | Prep.              | \$25              | 4            |                   |
| Lia Marentes    | Spec. Ed.   | Psychologist Supp. | Per Diem          | 18/Day       | 02/12/14-06/12/14 |

Extra Duty Assignments (Cont'd)

| <u>Employee</u>     | <u>Site</u> | <u>Extra Duty</u>          | <u>Hrly. Rate</u> | <u>Hours</u> | <u>Effective</u>  |
|---------------------|-------------|----------------------------|-------------------|--------------|-------------------|
| Peggy Mendez        | Ed. Svs.    | Math Comm. Core Task Force | \$25              | 20           | 09/01/13-06/13/14 |
| John Miller         | Tuffree     | School Website             | \$25              | 60           | 01/31/14-06/30/14 |
| Kelly Moreno        | Spec. Ed.   | Home Instruction           | \$27              | 120          | 01/06/14-06/12/14 |
| Nirmala Nagenthiram | Spec. Ed.   | Caseload Asst.             | \$25              | 7/Wk         | 01/13/14-06/12/14 |
| Alma Obkircher      | Ed. Svs.    | TOSA Spec. Assign.         | \$25              | 160          | 09/01/13-06/30/14 |
| Wesley Peacock      | YLHS        | Common Core                | \$25              | 10           | 12/15/13-01/15/14 |
| Robert J. Platt     | YLHS        | Comm. Svs. Coord.          | \$25              | 100          | 01/06/14-06/13/14 |
| Kathleen Schroeder  | Parkview    | Short Term Wrkshp. Prep    | \$27<br>\$25      | 15<br>10     | 02/05/14-04/23/14 |
| Stephanie Scott     | Ed. Svs.    | ELD Training               | \$25              | 20           | 12/01/13-06/30/14 |
| Briana Seward       | Ruby Drive  | Staff Dev.                 | \$25              | 20           | 01/06/14-06/12/14 |
| Matthew Stine       | YLHS        | Curriculum Dev.            | \$25              | 50           | 01/06/14-06/13/14 |
| Wendy Takahashi     | Valencia    | PAR Mentor                 | \$25              | 10           | 03/03/13-06/19/13 |
| Lisa White          | Valadez     | Staff Dev.                 | \$25              | 40           | 02/11/14-06/30/14 |
| Lisa White          | Valadez     | SLIP Coord.                | \$25              | 40           | 02/11/14-06/30/14 |

Educational Services, Common Core State Standards Literacy Task Force, \$25/Hr., NTE 30 Hrs., 02/11/14-06/30/14

Tiffany Badger  
Samantha Beck  
Erin Braun  
Jennifer Bremer  
Jackie Caballero  
Cameron Castaneda  
Adele Collins  
Jaclyn Deano  
Nadine Elwood  
Laurel Estrada  
Laurie Guy  
Terri Hanna  
Amy Henderson  
Janeen Hill  
Jacqueline Jenkins  
Patricia Johnson  
Karen Keenan  
Alesa Kerr  
Russell Klinger  
Catheen LaBare  
Paul LaPorte  
Donna Lopez  
Noelle Lopez  
Jennifer Luchesi  
Jill McClain  
Scott Mazurier  
Kristin McDonald  
Suzanne Munsell  
Stacy Owens  
Christine Perkins



Educational Services, Common Core State Standards Literacy Task Force, \$25/Hr., NTE 30 Hrs.,  
02/11/14-06/30/14 (Cont'd)

Kristen Petrovacki  
 Carrie Pipkin  
 Laura Richard-Barasch  
 Dianne Richter  
 Nicole Rodriguez  
 Kimberly Schultz  
 Patricia Shea  
 Sherri Simmons  
 Lyndsey Smith  
 Valerie Steinbergs  
 Angela Taylor  
 Deana Thelen  
 Shane Twamley  
 Teresa Vitelli  
 Eva C. Ybarra

Educational Services, Saturday School Program, Instruction \$27/Hr., Prep., \$25/Hr., 2013-2014 SY

| <u>Employee</u>    | <u>NTE Instr Hrs</u> | <u>Prep</u> | <u>Site</u>  |
|--------------------|----------------------|-------------|--------------|
| Ronald Bremer      | 12                   | 6           | Travis Ranch |
| Evgenia Zamorshaia | 12                   | 6           | Melrose      |

Educational Services, Saturday Work Study, \$27/Hr., 2013-2014 SY

| <u>Employee</u> | <u>NTE Hours</u> | <u>Site</u> |
|-----------------|------------------|-------------|
| Kevin Shanahan  | 40               | YLHS        |

Educational Services, EDI Survey/Study, \$25/Hr., 01/14/14-03/31/14

| <u>Name</u>         | <u>NTE Hours</u> |
|---------------------|------------------|
| Anna Behrendt       | 15               |
| Carol Chisum-Rogers | 15               |
| Heather Christman   | 15               |
| Faith Croswell      | 15               |
| Sara Deland         | 15               |
| Ticians Doty        | 10               |
| Tiffany Eliot       | 15               |
| Lizette Garcia      | 15               |
| Adriana Garcia-Ruiz | 15               |
| Shannon Gibson      | 15               |
| Jamie Grijalva      | 15               |
| Illyse Harker       | 15               |
| Carol Heath         | 15               |
| Marianne Hill       | 10               |
| Stacy Keen          | 15               |
| Carolyn Kim         | 10               |
| Julie Lama          | 15               |
| Mary Larson         | 15               |
| Tara Leifeste       | 15               |
| Christie Miller     | 15               |
| Brieanna Patriquin  | 10               |
| Stacy Perr          | 10               |

Educational Services, EDI Survey/Study, \$25/Hr., 01/14/14-03/31/14 (Cont'd)

| <u>Name</u>       | <u>NTE Hours</u> |
|-------------------|------------------|
| Janet Salley      | 10               |
| Sandy Santa Maria | 15               |
| Bonnie Thompson   | 15               |
| Teresa Vitelli    | 15               |
| Cheryl Workman    | 15               |

Educational Services, ELD Training, 12/01/13-06/30/14

| <u>Employee</u> | <u>NTE Hrs.</u> |
|-----------------|-----------------|
| Coreen Cardenas | 30              |
| Stephanie Scott | 10              |

Educational Services, ELD Instruction, \$27/Hr., 01/30/14-05/29/14

| <u>Employee</u> | <u>NTE Hours</u> | <u>Site</u> |
|-----------------|------------------|-------------|
| Rebeca Guerrero | 130              | Lakeview    |
| Amanda Vuoso    | 75               | Tynes       |

Educational Services, GATE Focus Group, \$25/Hr., NTE 6 Hrs., 01/23/14-06/30/14

Kellie Erskine  
Jill Mc Clain  
Robin Whitcroft

Educational Services, RTI Instruction, \$27/Hr., 01/30/14-06/13/14

| <u>Employee</u> | <u>NTE Hours</u> | <u>Site</u> |
|-----------------|------------------|-------------|
| Rebeca Guerrero | 335              | Lakeview    |

Educational Services, McKinney Vento Tutoring, \$27/Hr., NTE 30 Hrs., 01/14/14-06/13/14

Cory-Anne Johnston  
Helen Nelson  
Sofia Vander Kooy

Educational Services, McKinney Vento Counseling, \$35/Hr., NTE 50 Hrs., 01/25/14-06/13/14

Nancy Coulter  
Dana Worden

Educational Services, Student Study Task Force, \$25/Hr., NTE 30 Hrs., 02/12/14-06/30/14

Laurel Ayer  
Mary Bailey  
Jackie Caballero  
Laurel Estrada  
Susan Farano  
Antonia Finn  
Jon Gomez  
Deanne Hoff  
Erin Koss  
Shari Lee  
Jennifer Luchesi  
Scott Mazurier  
Teresa Mulcahy  
Jodi Nakamoto

Educational Services, Student Study Task Force, \$25/Hr., NTE 30 Hrs., 02/12/14-06/30/14 (Cont'd)

Christine Perez  
 Margaret Silver  
 Donna Simester  
 Gail Spear  
 Valerie Steinbergs  
 Deana Thelen  
 Shane Twamley  
 Sofia Vander Kooy  
 Carol Wardwell  
 Judy Yen

Stipends

| <u>Employee</u>     | <u>Site</u> | <u>Duty</u>            | <u>NTE Amount</u> | <u>Effec. Dates</u> |
|---------------------|-------------|------------------------|-------------------|---------------------|
| Barrett Gardner     | Valencia    | Dept. Chair 1-Health   | \$900.00          | 11/01/13-06/13/14   |
| Jacquelyn Schroeder | Valadez     | Lead Teacher-Spec. Ed. | \$215.00          | 04/07/14-06/13/14   |
| Kathleen Smith      | Kraemer     | Speech & Debate Club   | \$800.00          | 02/03/14-06/12/14   |

Educational Services, Enrichment Summer School Principal, 02/01/14-07/24/14

| <u>Employee</u> | <u>NTE Amount</u> |
|-----------------|-------------------|
| Michael Young   | \$11,031.55       |

Morse, Outdoor Science Program, NTE \$343.00, 02/11/14-02/14/14

Claudia Sundstrom  
 Tami Tang

District Funded Co-Curricular Assignments

| <u>Stipends</u>    | <u>Site</u> | <u>Co-Curricular Assignment</u> | <u>NTE Amount</u> | <u>Effective</u>  |
|--------------------|-------------|---------------------------------|-------------------|-------------------|
| Michael Ashe       | El Dorado   | Hd Men's Swimming               | \$3448.00         | 03/01/14-05/09/14 |
| Greg Beckman       | El Dorado   | Hd Track                        | \$3676.00         | 03/01/14-05/09/14 |
| Scott Boveia       | El Dorado   | Women's Swimming                | \$2534.00         | 03/01/14-05/09/14 |
| Wayne Carlson      | El Dorado   | Hd Men's Golf                   | \$2991.00         | 03/01/14-05/09/14 |
| Mark Castillo      | Valencia    | Hd Women's Golf CIF             | \$498.00          | 10/23/13-10/31/13 |
| Mark Castillo      | Valencia    | Hd Men's Golf                   | \$2991.00         | 02/15/14-05/09/14 |
| Melissa Chavez     | El Dorado   | Hd Softball                     | \$3676.00         | 03/01/14-05/16/14 |
| Michael Connor     | Valencia    | Track                           | \$2512.00         | 02/15/14-05/09/14 |
| John Cyrus         | El Dorado   | Hd Men's Tennis                 | \$3219.00         | 03/01/14-05/09/14 |
| Sarah Davila       | Valencia    | Hd Women's Swimming             | \$3448.00         | 02/15/14-05/09/14 |
| David Fenstermaker | Valencia    | Football CIF                    | \$247.00          | 11/09/13-11/15/13 |
| Brandon Frank      | Valencia    | Hd Men's X-Country CIF          | \$747.00          | 10/31/13-11/16/13 |
| Brandon Frank      | Valencia    | Hd Men's Track                  | \$3676.00         | 02/15/14-05/09/14 |
| Eduasyr Garcia     | Valencia    | Hd Women's X-Country CIF        | \$747.00          | 10/31/13-11/16/13 |
| Luis Garcia        | Valencia    | Football CIF                    | \$247.00          | 11/09/13-11/15/13 |
| Sarah Garcia       | Valencia    | Women's X-Country CIF           | \$624.00          | 10/31/13-11/16/13 |
| Barrett Gardner    | Valencia    | Hd Women's Lacrosse             | \$3198.00         | 02/15/14-05/16/14 |
| John German        | Valencia    | Football CIF                    | \$247.00          | 11/09/13-11/15/13 |
| John German        | Valencia    | Hd Softball                     | \$3746.00         | 02/15/14-05/16/14 |
| Jason Gray         | Valencia    | Football CIF                    | \$247.00          | 11/09/13-11/15/13 |
| Jason Gray         | Valencia    | Track                           | \$2762.00         | 02/15/14-05/09/14 |
| Daniel Henshall    | El Dorado   | Track                           | \$2450.00         | 03/01/14-05/09/14 |
| David Johnson      | El Dorado   | Hd Women's Swimming             | \$3448.00         | 03/01/14-05/09/14 |

District Funded Co-Curricular Assignments (Cont'd)

| <u>Stipends</u>            | <u>Site</u> | <u>Co-Curricular Assignment</u> | <u>NTE Amount</u> | <u>Effective Richard</u> |
|----------------------------|-------------|---------------------------------|-------------------|--------------------------|
| King                       | Valencia    | Marching Band Director CIF      | \$204.00          | 11/09/13-11/15/13        |
| Albert Lai                 | Valencia    | Women's Tennis CIF              | \$832.00          | 11/02/13-11/25/13        |
| Albert Lai                 | Valencia    | Men's Tennis                    | \$2534.00         | 02/10/14-05/09/14        |
| Mike Lorge                 | Valencia    | Baseball                        | \$2762.00         | 02/15/14-05/16/14        |
| William M. Lucas           | El Dorado   | Hd Baseball                     | \$3426.00         | 03/01/14-05/16/14        |
| Matthew Mahoney            | Valencia    | Football CIF                    | \$247.00          | 11/09/13-11/15/13        |
| Jason Marganian            | Valencia    | Hd Men's Water Polo CIF         | \$498.00          | 11/02/13-11/20/13        |
| Jason Marganian            | Valencia    | Hd Men's Swimming               | \$3448.00         | 02/15/14-05/09/14        |
| Mike Marrujo               | Valencia    | Hd Football CIF                 | \$343.00          | 11/09/13-11/15/13        |
| Mike McCall                | Valencia    | Hd Women's Tennis CIF           | \$1080.00         | 11/02/13-11/25/13        |
| Mike McCall                | Valencia    | Hd Men's Tennis                 | \$3219.00         | 02/10/14-05/09/14        |
| Ryan Mounce                | El Dorado   | Men's Golf                      | \$2534.00         | 03/01/14-05/09/14        |
| Pat O'Donnell              | El Dorado   | Hd Women's Lacrosse             | \$3448.00         | 03/01/14-05/16/14        |
| Jeff Picou                 | El Dorado   | Baseball                        | \$2512.00         | 03/01/14-05/16/14        |
| Curt Pike                  | Valencia    | Men's X-Country CIF             | \$624.00          | 10/31/13-11/15/13        |
| Mike Scheetz               | Valencia    | Football/Baseball               | \$250.00          | 08/19/13-12/31/13        |
| Jeff Secoda                | Valencia    | Hd Baseball                     | \$3426.00         | 02/15/14-05/16/14        |
| Matt Slevcove              | Esperanza   | Women's Water Polo              | \$250.00          | 11/25/14-02/14/14        |
| Gabrielle Stephenson       | YLHS        | Academic Coach                  | \$1371.00         | 01/06/14-06/13/14        |
| Paulo Sunia                | Valencia    | Football CIF                    | \$247.00          | 11/09/13-11/15/13        |
| Paulo Sunia                | Valencia    | Hd Men's Lacrosse               | \$3448.00         | 02/15/14-05/16/14        |
| Jason Sweet                | El Dorado   | Track                           | \$2450.00         | 03/01/14-05/09/14        |
| Charles Titus              | EL Dorado   | Hd Track                        | \$3676.00         | 03/01/14-05/09/14        |
| John Van Dam               | Valencia    | Women's Lacrosse                | \$2534.00         | 02/15/14-05/16/14        |
| Greg Walls                 | YLHS        | Academic Coach                  | \$1371.00         | 01/06/14-06/13/14        |
| Erica Harding-<br>Watanabe | Valencia    | Softball                        | \$2512.00         | 02/15/14-05/16/14        |

Booster Funded Co-Curricular Assignments

| <u>Stipends</u> | <u>Site</u> | <u>Co-Curricular Assignment</u> | <u>NTE Amount</u> | <u>Effective</u>  |
|-----------------|-------------|---------------------------------|-------------------|-------------------|
| Erik Ambriz     | Valencia    | Baseball                        | \$2512.00         | 02/15/14-05/16/14 |
| John Baughman   | YLHS        | Baseball                        | \$2500.00         | 11/25/13-02/14/14 |
| Scott Boveia    | El Dorado   | Women's Water Polo              | \$270.00          | 09/20/13-11/10/13 |
| Erik Cook       | Valencia    | Baseball                        | \$2762.00         | 02/15/14-05/16/14 |
| Michael Curran  | Esperanza   | Baseball                        | \$2500.00         | 01/01/14-02/28/14 |
| Wayne Elmore    | Esperanza   | Baseball                        | \$1000.00         | 09/30/13-01/31/14 |
| David Johnson   | El Dorado   | Hd Women's Water Polo           | \$400.00          | 09/20/13-11/10/13 |
| Erin Lang       | YLHS        | Event Supervision               | \$1000.00         | 12/01/13-06/30/14 |
| Mike Scheetz    | Valencia    | Baseball                        | \$2762.00         | 02/15/14-05/16/14 |
| Matthew Stine   | YLHS        | Hd Baseball                     | \$3400.00         | 11/25/13-02/14/14 |
| James Thorne    | Valencia    | Hd Men's Volleyball             | \$3219.00         | 02/18/14-05/07/14 |
| Matthew Vasquez | Valencia    | Baseball                        | \$2512.00         | 02/15/14-05/16/14 |
| Royce Watanabe  | Valencia    | Softball                        | \$2512.00         | 02/15/14-05/16/14 |
| Hannah Young    | Valencia    | Track                           | \$2000.00         | 02/15/14-05/09/14 |
| Nathan Yu       | El Dorado   | Men's Basketball                | \$1300.00         | 09/06/13-11/01/13 |

Substitute Teachers

Emma Armas  
Lynne Branson  
Allison Collins  
Michelle Fenstermaker  
Donna Guiles  
Paul Haderlein  
Kristina Hohmann  
Jodie Isenhouer  
Brian Kurzbard  
Stacey Maguire  
Mario Martinez  
Kimberly Noice  
Sylvia Recker  
Danielle Sabia  
Alise Salcido  
Lily Shih  
John Silvius  
Katelyn Skoien  
Tracey Thompson  
Paulina Tran

**EXTENDED FIELD TRIPS**

1. Esperanza High School Junior State of America Winter Congress Convention, February 15 – 16, 2014 in Torrance, California.
2. Valencia High School Junior State of America Winter Congress Convention, February 15 – 16, 2014 in Torrance, California.
3. El Dorado High School ASB Leadership Retreat, February 21 – 23, 2014 in Big Bear, California.
4. Esperanza High School German Camp, February 28 – March 2, 2013 in Big Bear, California.
5. Esperanza High School Contest of Champions Nationals, February 27 – March 3, 2013 in Orlando, Florida.
6. El Dorado High School Winter Guard International Regional Championships, March 15 – 16, 2014 in San Diego, California.
7. Valencia High School Winter Guard Western Championships, March 14 – 16, 2014 in San Diego, California.
8. Bernardo Yorba, Kraemer, Travis Ranch, Tuffree, Valadez Academy and Yorba Linda Middle Schools Annual California Association of Student Leaders Middle School State Conference, March 27 – 29, 2014 in Ontario, California.
9. Yorba Linda High School California Association of Student Leaders Conference, March 29 – 31, 2014 in Ontario, California.
10. Valencia High School FIRST Robotics Club Competition, April 2 – 6, 2014 in Las Vegas, Nevada.
11. Valencia High School Vocal Jazz Festival, April 4 – 5, 2014 in Oceanside, California.
12. El Dorado High School Reno International Jazz Festival, April 10 – 13, 2014 in Reno, Nevada.
13. El Dorado High School New York City Theatre Tour, April 14 -18, 2014 in New York, New York.

**BOARD POLICY**Placentia-Yorba Linda Unified School District

---

Administration

2230 - BP

**REPRESENTATIVE AND DELIBERATIVE GROUPS**

The Board of Education of the Placentia-Yorba Linda Unified School District believes that input on district operations and policy from staff, parents/guardians, students and members of the public can provide the district with a diversity of view points and expertise, enhance district efficiency, and assist district communications. As desired, the Superintendent or designee may establish a management team, administrative councils, task forces, cabinets or committees in accordance with law.

The membership, composition and responsibilities of these groups shall be defined by the Superintendent or designee. The Superintendent may establish, change or dissolve these groups at his/her discretion.

Groups established by the Superintendent or designee shall act in an advisory capacity unless specifically authorized to act on behalf of the superintendent or designee.

LEGAL REFERENCE: Government Code Sections 3540-3549.3

Policy adopted: 11/8/76

Policy revised: 3/28/83

Policy revised: 2/11/14

**BOARD POLICY**

Placentia-Yorba Linda Unified School District

---

Administration

2410 - BP

**ORGANIZATIONAL UNITS AND STRUCTURAL RELATIONSHIPS**

The general administrative organization of the district shall be known as the single executive type of school administration with the Board of Education as the governing body and with all activities under the direction of the superintendent of schools.

Organization and function charts for the district shall be prepared by the superintendent and approved by the Board of Education to designate clearly the relationships of all employees within the district organization. The organization and function charts shall be updated periodically and changes shall be approved by the Board of Education.

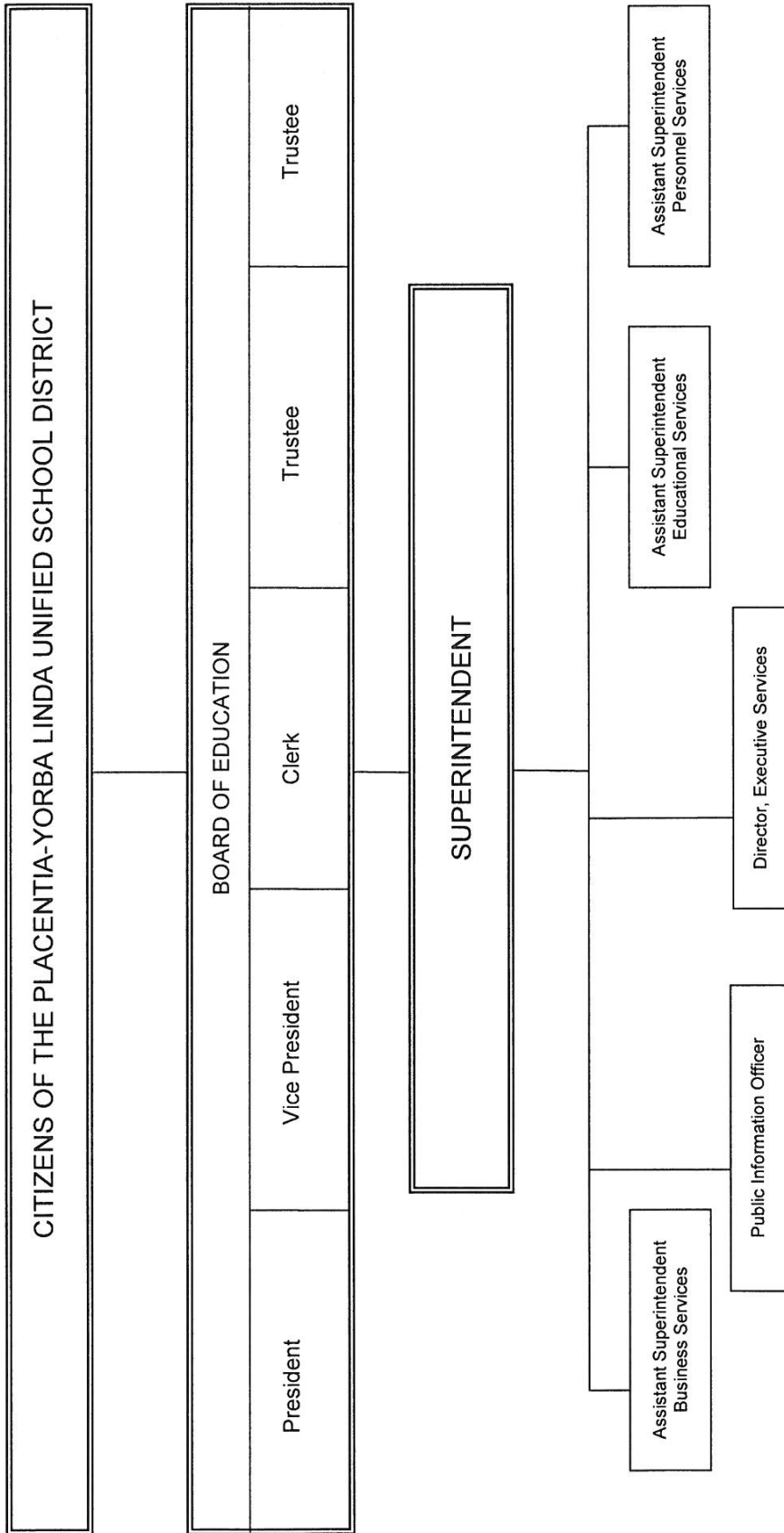
LEGAL REFERENCE:    Education Code    Section 35015  
                                                          Section 35020  
                                                          Section 35035

Policy adopted: 3/28/77  
Policy revised: 2/11/14

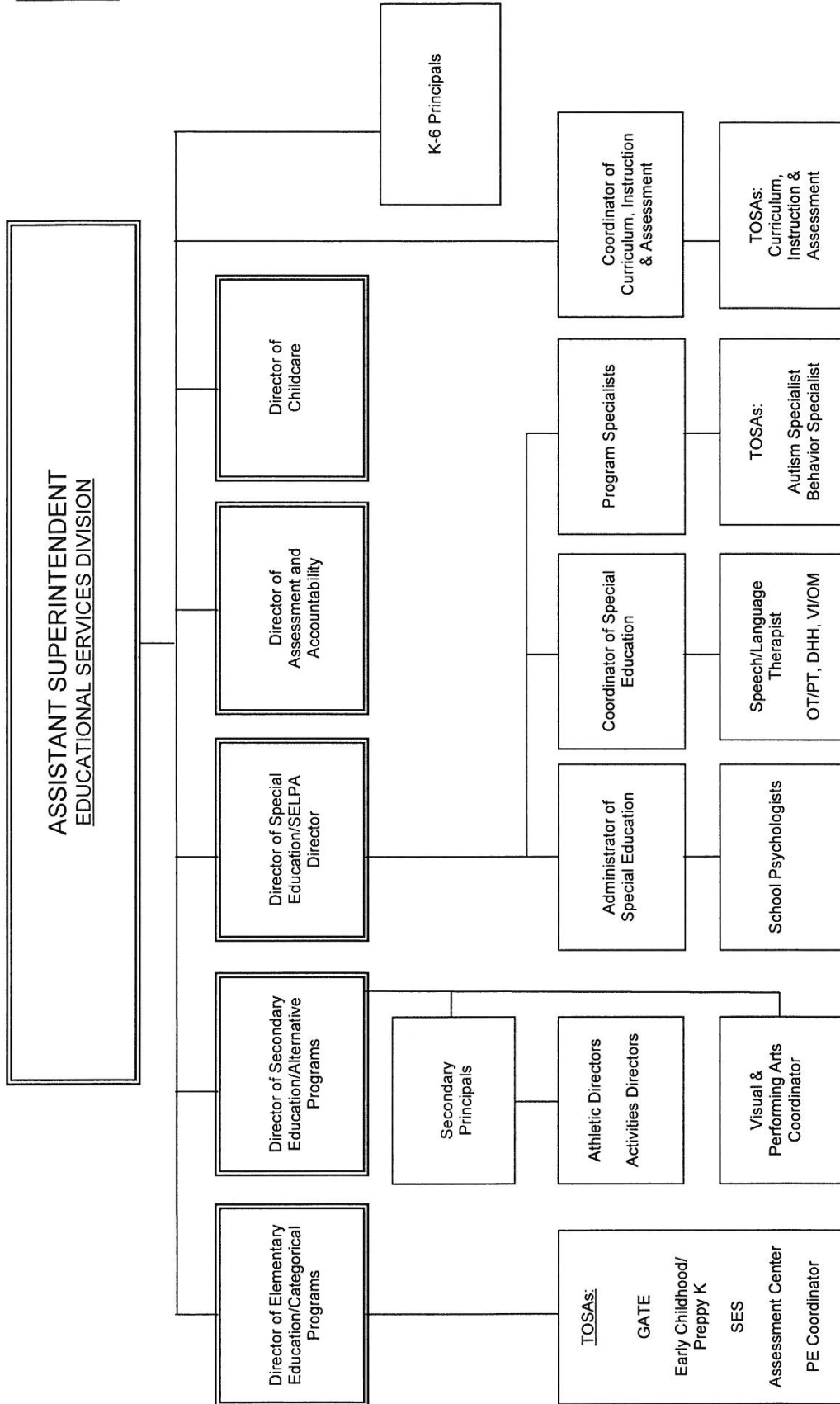


Administration

2410-E

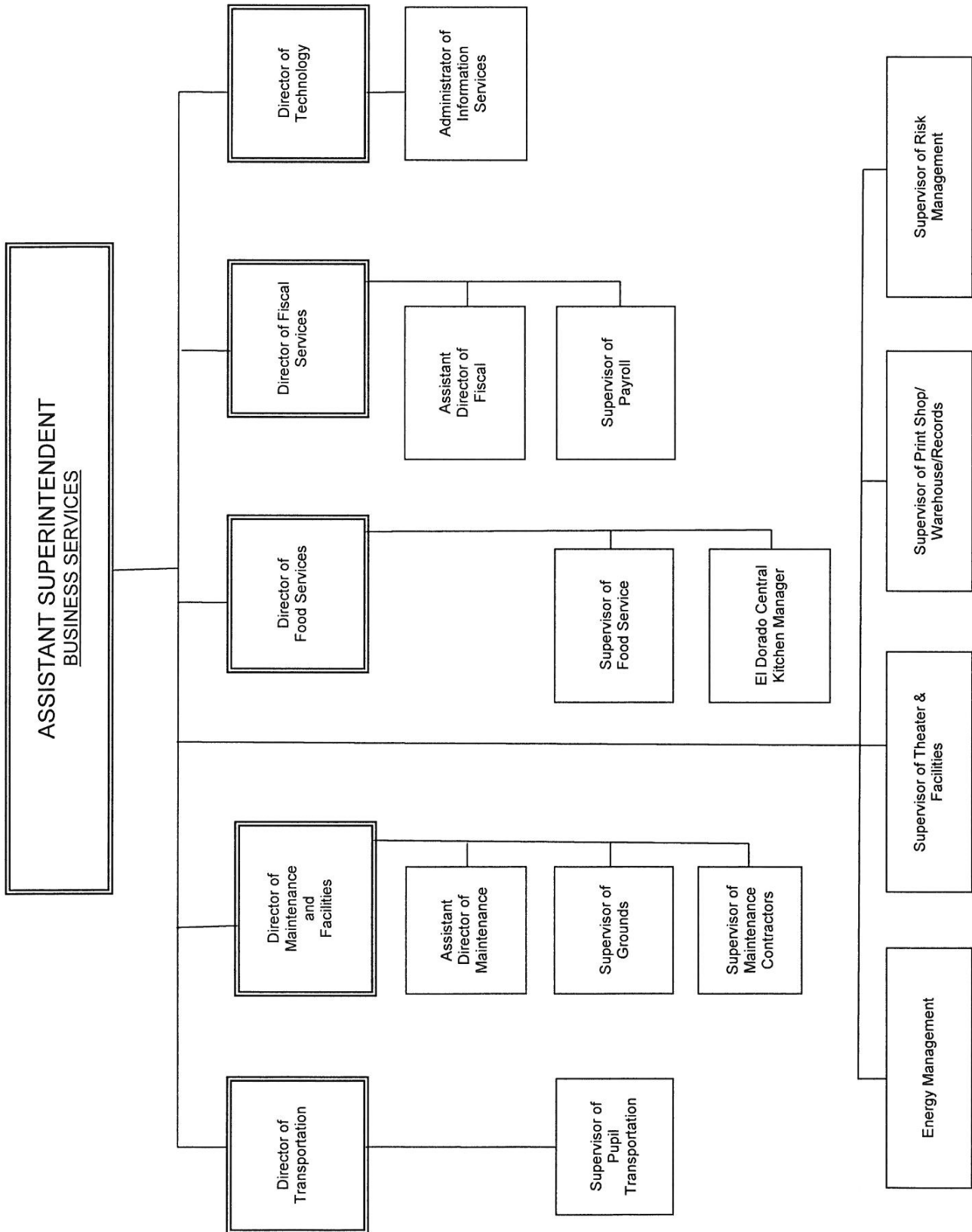


2013 – 2014 ORGANIZATIONAL CHART



2013 – 2014 ORGANIZATIONAL CHART

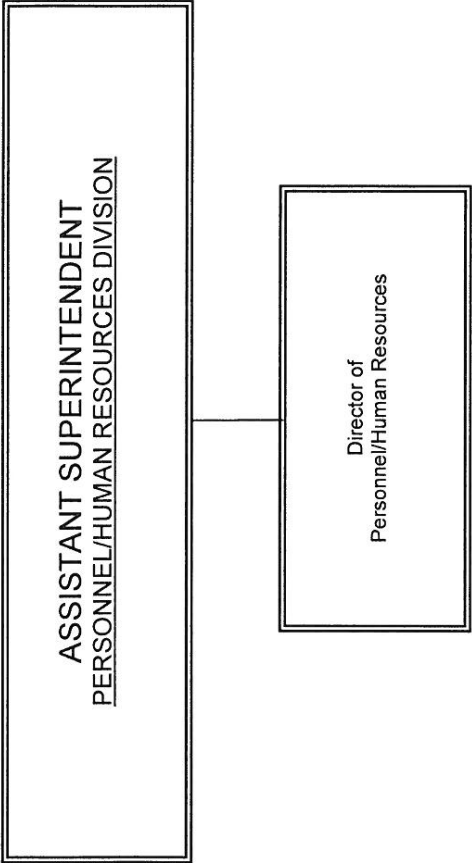
Administration



2013 – 2014 ORGANIZATIONAL CHART

Administration

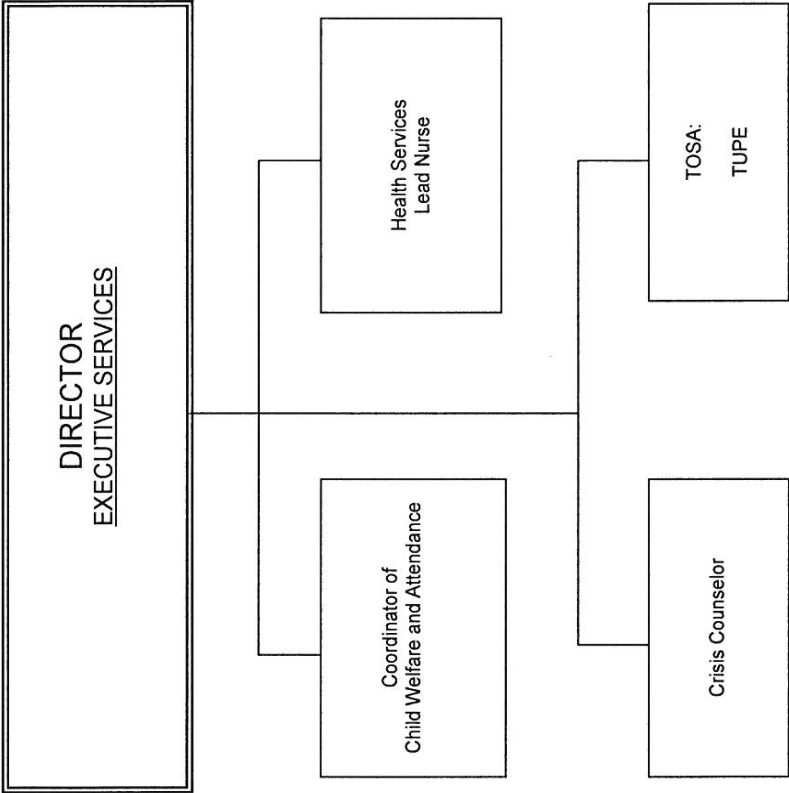
2410-E



**2013 – 2014 ORGANIZATIONAL CHART**

Administration

2410-E



**2013 – 2014 ORGANIZATIONAL CHART**

RESOLUTION NO. 13

**RESOLUTION SUPPORTING THE PLACENTIA-YORBA LINDA UNIFIED SCHOOL DISTRICT'S PARTICIPATION IN THE CALIFORNIA ENERGY COMMISSION'S BRIGHT SCHOOLS PROGRAM**

WHEREAS, the Placentia-Yorba Linda Unified School District recognizes that the California Energy Commission has limited funds available to provide technical assistance and that primary consideration will be given to those school districts that have a desire and willingness to seek funding to implement the feasible recommended energy-efficiency measure (s);

NOW, THEREFORE, BE IT RESOLVED that the Placentia-Yorba Linda Unified School District;

is willing to seek funding to implement viable energy-saving measure (s) and therefore requests technical assistance to identify such measures as may be economically feasible.

BE IT FURTHER RESOLVED that Assistant Superintendent of Business Services is hereby authorized and empowered to execute in the name of the Placentia-Yorba Linda Unified School District all necessary documents to implement and carry out the purposes of this resolution.

APPROVED, PASSED AND ADOPTED BY THE Governing Board of the Placentia-Yorba Linda Unified School District on the 11<sup>th</sup> day of February 2014 by the following vote:

AYES: Carrie Buck, Eric Padget, Judi Carmona, Karin Freeman

NOES: None

ABSENT: Carol Downey

ABSTAINED: None

\_\_\_\_\_  
Carrie Buck  
President of the Governing Board of the  
Placentia-Yorba Linda Unified School District

Attested to:

\_\_\_\_\_  
Judi Carmona  
Clerk of the Governing Board of the  
Placentia-Yorba Linda Unified School District